

THE BEAD HOLD

www.thebeadhold.co.nz

These instructions are copyright to The Bead Hold and may not be sold or reproduced without permission

The Tsarina's CROCHET CUFF Instructions



MATERIALS NEEDED

- 1 roll of 28 gauge Artistic wire (or 12 - 14 meters)
- 40 - 50 small/medium feature beads
- 2 - 3 colours of seed beads
 - # 11 and #8 for a fine cuff
 - # 8 and #6 for a chunkier cuff
- A button with a shank (loop in the back)

EQUIPMENT NEEDED

- A bead mat to work on
- 1 x 3.5mm crochet hook
- Wire Cutters

Preparation

Mix your seed beads together into a 'bead soup.'

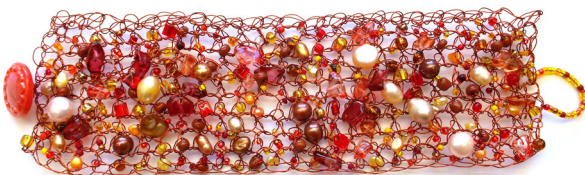
Thread your beads onto the 28 gauge wire at random. You should have a short segment of seed beads in between each feature bead (around 1cm). You need approx 70 - 80cm of beads strung up.

NOTE: If you want a very chunky cuff, you will want more feature beads and less seed beads.

DO NOT cut the wire once they are all on!

Keep pushing the beads down the wire as you string so you have a clear amount of wire to work with once done.

Twist a loop at the end of the wire approx 1cm long and 20 cm from the end of the wire, ready to start crocheting.



Make the foundation row . . .

1. Put your crochet hook through the loop you have made, hook facing you. Hold the length of wire in your other hand, keeping the tension tight.

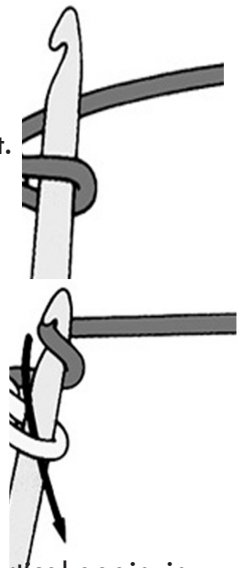
2. Bring the wire to your right, pass it behind the crochet hook and swing it up so it nestles under the hook.

3. Turn the hook to the left so it catches the wire, and draw the hook and the wire down through your loop. Try and keep the stitch big and open

4. Swing the hook back up so it is vertical again, in the new loop you have created.

Repeat from step 1 to make a continuous chain of stitches - enough to fit comfortably around your wrist, with the last chain stitch touching the first chain stitch.

Try and keep each stitch big and open as this will make the next stage MUCH easier!



This finer version is made using 34 gauge craft wire instead of 28 gauge.

The First Beaded Row . . .

1. Take the last stitch of the chain you have just finished and bend it up on a 90 degree angle.

Leave your hook in the stitch.

You will now be working with a double crochet stitch. Look to the right for instructions.

2. Put the crochet hook through the *next* stitch in the chain. Slide a bead down (one feature bead or 1 - 3 seed beads).
3. Make a double crochet stitch
4. Continue this way down the whole foundation row of chain stitches. Double crochet into each stitch in the foundation row, remembering to add a bead (or two) each time.
5. At the end of the row, crochet an extra CHAIN stitch.

Continue On . . .

1. Take the chain stitch you just made and bend it up on a 90 degree angle.

TIP: to make life easy, 'flip' your cuff over so that you are working in the same direction as the previous row.

2. Take your crochet hook and go through the second stitch on the previous row. Slide a bead down and make a double crochet stitch.

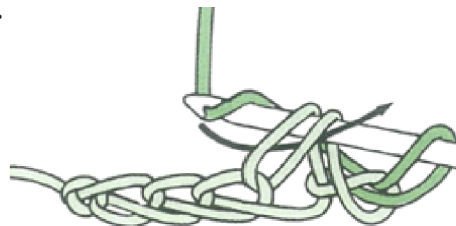
8. Continue along the row making beaded double crochet stitches. At the end of the row make a single chain stitch and begin the next row the same way as you have just done.

Continue in this fashion until the cuff is as wide as you want it. Cut the wire approx 30cm from the last stitch (it is better to have too much wire than not enough). Pull the end of the wire up tight through the last stitch to make a knot.

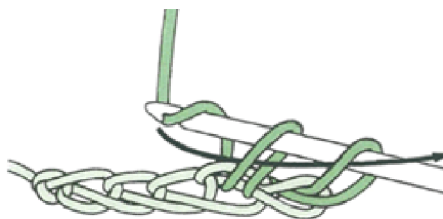


HOW TO: Double Crochet

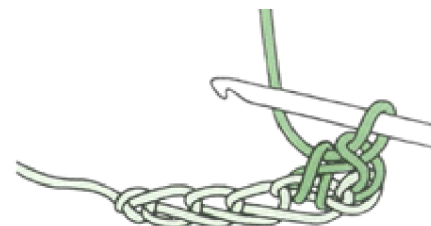
Your hook will already be in a stitch. Insert the hook into the next stitch in the row as directed. There will now be 3 loops on your hook. Wrap your working wire over as for a single chain stitch and draw the wire through the **first** stitch/loop on your hook as shown in this picture.



Take the working wire over the hook again and pull this through the last two stitches on your hook.



You will finish with one loop left on your hook, ready to start again.



Make the Button Loop

1. Weave the last 30cm of wire along the end edge of the cuff until it is in the middle.
2. Thread enough seed beads onto the wire to make a loop that fits over your button. Anchor the wire to the middle of the edge so that the loop is tight by wrapping the wire 1 - 2 times around a middle stitch. Take the wire and go back through the whole seed bead loop a second time to reinforce it.
3. Wrap the wire tightly four times around one of the stitches on the middle/edge of the cuff and cut off the remaining wire. Take care not to leave a small sharp piece that sticks out.

Attach the Button

1. Use the 20cm of wire at the other end of the cuff. Weave the wire along the edge until it is in the middle.
2. Go through the shank of the button and then wrap the wire through one of the middle edge stitches. Repeat 4-5 times until the button is securely attached. Wrap the wire tightly four times around one of the stitches and cut off the excess wire. Take care not to leave a small sharp piece that sticks out.